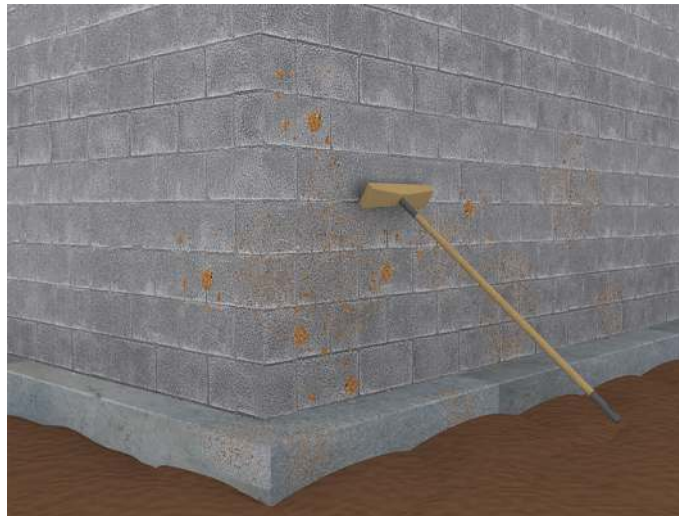




# Home Stretch™ Liquid Waterproofing

Fluid Applied Waterproofing Membrane

## Installation Instructions



### STEP 1

Apply the Poly Wall Home Stretch Liquid waterproofing system onto vertical cast-in-place concrete, concrete masonry (CMU), or precast foundation walls. The substrate foundation wall must be clean; dry; clear of dirt, debris, frost, smears, and concrete form release agents; and be allowed to cure a minimum three (3) days prior to the application of the Home Stretch Liquid waterproofing system. Do not use the Home Stretch Liquid waterproofing system on Insulated Concrete Form (ICF) walls, which utilizes rigid plastic foam insulation. The Home Stretch Liquid membrane contains solvents which will attack the rigid foam insulation. For ICF walls, PolyWall recommends our Home Stretch Membrane ICF sheet waterproofing system. Take safety precautions and wear appropriate safety gear for the application of solvent-based coatings (i.e. gloves, eye protection, ventilation, etc.). Prohibit flames, sparks, welding, or smoking around the Home Stretch Liquid membrane and during its application.



**POLY WALL® BUILDING SOLUTIONS:**  
**Moisture and Air Stop Here®**  
888-976-POLY (7659) • [www.poly-wall.com](http://www.poly-wall.com)

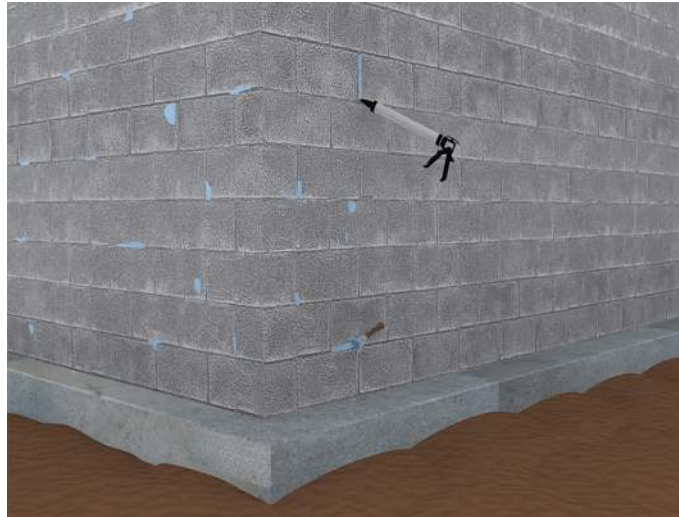




# Home Stretch™ Liquid Waterproofing

Fluid Applied Waterproofing Membrane

## Installation Instructions



### STEP 2

Minor voids in the foundation wall, as well as wall control joints, are to be filled and sealed with Poly Wall Blue Barrier 2200 Joint Filler. Application of the Blue Barrier 2200 can be executed either before or after the application of the Poly Wall Home Stretch Liquid waterproofing membrane. Allow the Blue Barrier 2200 Joint Filler a minimum one (1) hour to skin over before covering with the Home Stretch Liquid, adding additional time for lower ambient and surface temperatures. A primer is not required to install Home Stretch Liquid onto cast-in-place concrete or concrete masonry (CMU) foundation walls. Install the membrane directly over clean and dry foundation walls in ambient and surface temperatures between 0 (F) and 120 (F).



**POLY WALL® BUILDING SOLUTIONS:**  
**Moisture and Air Stop Here®**  
888-976-POLY (7659) • [www.poly-wall.com](http://www.poly-wall.com)

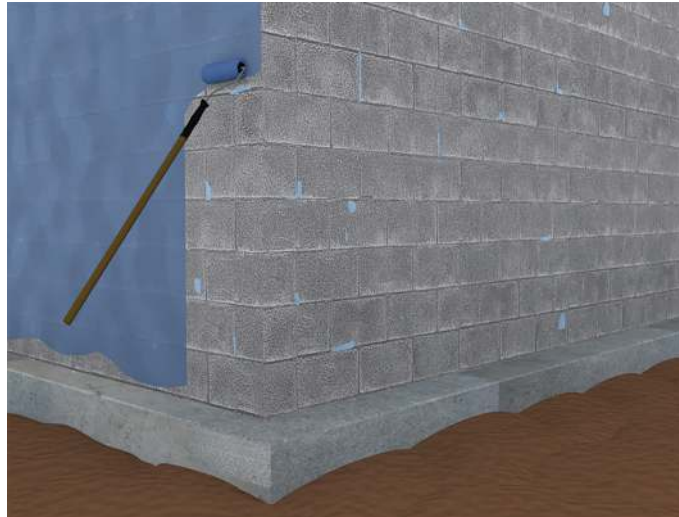




# Home Stretch™ Liquid Waterproofing

Fluid Applied Waterproofing Membrane

## Installation Instructions



### STEP 3

Apply Home Stretch Liquid evenly to the foundation wall in one or more coats using airless spray equipment, brush, or roller, to achieve a continuous film at the desired coverage rate of 27 square feet per gallon (60 mils wet in total). Home Stretch Liquid dries to a total average thickness of 30 mils. Coverage rates will vary inversely related to the concrete substrate texture and porosity.



**POLY WALL® BUILDING SOLUTIONS:**  
**Moisture and Air Stop Here®**  
888-976-POLY (7659) • [www.poly-wall.com](http://www.poly-wall.com)





# Home Stretch™ Liquid Waterproofing

Fluid Applied Waterproofing Membrane

## Installation Instructions



### STEP 4

For applications with an airless sprayer, use 3700 to 4000 PSI stall pressure and a 0.037-inch reversible tip. Allow the Home Stretch Liquid application to dry for a minimum twenty-four (24) hours, and then inspect for complete and continuous coverage. During the inspection, apply additional Home Stretch Liquid material as needed to provide a complete and continuous membrane, then allow an additional minimum twenty-four (24) hours for the additional material to dry before continuing work on the foundation wall surface. Drying in direct sunlight and temperatures above 65°F (18°C) can cause blistering of Home Stretch Liquid. Where said exposure can't be avoided, apply the waterproofing membrane in multiple coats of 20 to 30 mils wet, allowing each application layer to dry a minimum twenty-four (24) hours before applying the next layer. Apply Home Stretch Liquid from the bottom of the foundation wall to align with grade. When continuing the Home Stretch Liquid above grade level is required to reach the top of foundation, apply Poly Wall Aluma Flash PLUS or metal flashing over all of the Home Stretch Liquid above grade, with its lower edge a minimum of four (4) inches below grade, to protect the installed Home Stretch Liquid from UV exposure beyond its 30 day limit.



**POLY WALL® BUILDING SOLUTIONS:**  
**Moisture and Air Stop Here®**  
888-976-POLY (7659) • [www.poly-wall.com](http://www.poly-wall.com)





# Home Stretch™ Liquid Waterproofing

Fluid Applied Waterproofing Membrane

## Installation Instructions



### STEP 5A

Apply a 3/4-inch, tooled bead of Poly Wall Blue Barrier 2200 Joint Filler at the intersection of the vertical foundation wall and the horizontal footer face prior to the Home Stretch Liquid application.



POLY WALL® BUILDING SOLUTIONS:  
**Moisture and Air Stop Here®**  
888-976-POLY (7659) • [www.poly-wall.com](http://www.poly-wall.com)





# Home Stretch™ Liquid Waterproofing

Fluid Applied Waterproofing Membrane

## Installation Instructions



### STEP 5B

If Home Stretch Liquid is continued at the base of the foundation wall onto the footer, apply a 3/4-inch, tooled bead of Poly Wall Blue Barrier 2200 Joint Filler at the intersection of the vertical foundation wall and the horizontal footer face prior to the Home Stretch Liquid application.



POLY WALL® BUILDING SOLUTIONS:  
**Moisture and Air Stop Here®**  
888-976-POLY (7659) • [www.poly-wall.com](http://www.poly-wall.com)

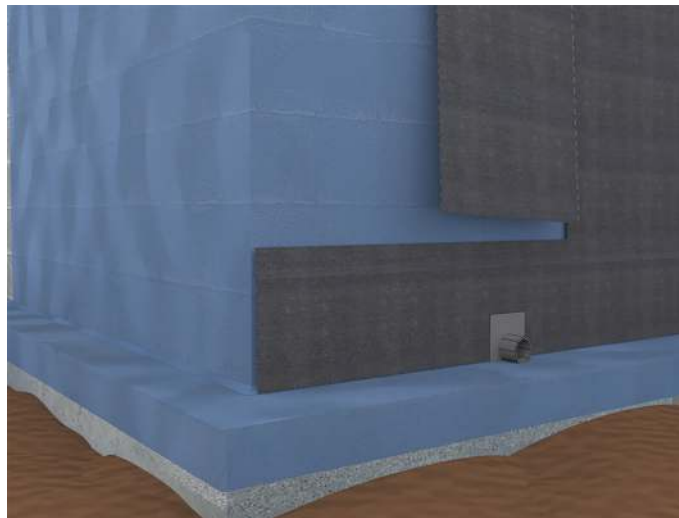




# Home Stretch™ Liquid Waterproofing

Fluid Applied Waterproofing Membrane

## Installation Instructions



### STEP 6

Install Poly Wall's Arroyo brand of Protection and Drainage Board accessory products over the complete and continuous Home Stretch Liquid waterproofing system; or provide another protective board by others, and then backfill in a non-destructive manner. After application, the Home Stretch Liquid waterproofing membrane is not affected by immediate or subsequent exposure to rainy weather. Home Stretch Liquid will be adversely affected by prolonged or constant ultraviolet radiation (UV) exposure longer than 30 days. For periods of (UV) exposure greater than 30 days, remove and recoat uncovered/exposed Home Stretch Liquid.



**POLY WALL® BUILDING SOLUTIONS:**  
**Moisture and Air Stop Here®**  
888-976-POLY (7659) • [www.poly-wall.com](http://www.poly-wall.com)



REV02/14/17