



Blue Barrier™ Flash 'N Wrap™ 2400

Installation Instructions

Tools/Materials Needed

- 2- or 5-gallon pail of Poly Wall Blue Barrier Flash 'N Wrap 2400
- 10.1 oz caulking or 20 oz. sausage tube of Poly Wall Blue Barrier Joint Filler 2200
- Caulking gun
- Chip Brush
- 4- or 6-inch, hot-dog-style roller handle and mini roller. (Roller pad has a small hole to accept handle.) Using a 4- or 6-inch hot-dog-style roller handle and a high-density foam cover will give you the best yields and coverage. The roller width is dependent on the framing around your window a 4-inch roller for 2x4 construction, a 6-inch roller for 2x6 construction is more convenient, both will work.
- 2- to 4-inch plastic putty knife or trowel. Plastic cleans easier in this application than metal.
- Optional: A piece of beveled siding sized to your rough opening to provide positive slope.



STEP 1

Clean & Prepare the rough opening. Simply take a stiff brush followed by a damp rag and wipe away debris, sawdust, dirt or foreign matter off all surfaces including the rough opening and 6-inches around the outside perimeter of the window opening on the sheathing itself.



POLY WALL® BUILDING SOLUTIONS:
Moisture and Air Stop Here®
888-976-POLY (7659) • www.poly-wall.com





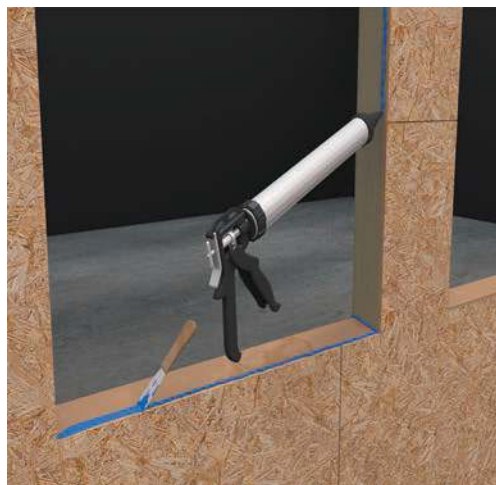
Blue Barrier™ Flash 'N Wrap™ 2400

Installation Instructions



STEP 2

Provide Positive Slope on the rough opening sill per Window Manufacturer's Installation Specifications. In common practice, this can be achieved by cutting a piece of beveled siding the size of the rough opening with thick side towards interior and nail in place. **VERY IMPORTANT...**if you choose to do this; you must account in advance for the space in the rough opening you take up with the positive slope, or your window will not fit.



STEP 3

Detail any void greater than 1/8-inch with Poly Wall Blue Barrier 2200 Joint Filler. This would include any dissimilar materials, cracks, imperfections. Simply apply with the caulking or sausage gun and strike smooth with the putty knife where accessible. In the corners feel free to use your index finger with a damp cloth over it. On average after 30 minutes product is ready for the next step depending on Relative Humidity and Temperature. To be sure simply place finger upon the Joint Filler. It is likely to still be "tacky" but if it does not stick to your finger you are good to go.



POLY WALL® BUILDING SOLUTIONS:
Moisture and Air Stop Here®
888-976-POLY (7659) • www.poly-wall.com





Blue Barrier™ Flash 'N Wrap™ 2400

Installation Instructions



STEP 4

Open the pail of Poly Wall Blue Barrier Flash 'N Wrap 2400, no stirring necessary. Remove the lid liner and save it for later use. Load the roller by dipping in bucket shaking off any excess coating material into the bucket.



STEP 5

Starting with the top left hand corner of the rough opening itself on the inside of the jamb from the corner, apply flashing material 6-inch down from the corner and then 6-inch over from left to right on the header. This procedure will allow you more even distribution of the coating as you take it from the bucket. Be sure to work the material into the corner. Your chip brush can be helpful for this. Maintain a uniform thickness where you can see no wood color. Common practice is to utilize a mil gauge, if you have access to one, to measure flashing thickness to 20 mils wet.



POLY WALL® BUILDING SOLUTIONS:
Moisture and Air Stop Here®
888-976-POLY (7659) • www.poly-wall.com





Blue Barrier™ Flash 'N Wrap™ 2400

Installation Instructions



STEP 6

Repeat on right side 6-inches down from corner, 6-inches over on header, this time right to left and complete the corner itself. Coat the balance of the header (the middle) with flashing.



STEP 7

Go back to left side and complete coating down the jamb to the sill. Repeat on the right side. You should now have coating on both sides and the top. Again, maintain a uniform thickness where you can see no wood color which will be about 20 mils wet.



POLY WALL® BUILDING SOLUTIONS:
Moisture and Air Stop Here®
888-976-POLY (7659) • www.poly-wall.com





Blue Barrier™ Flash 'N Wrap™ 2400

Installation Instructions



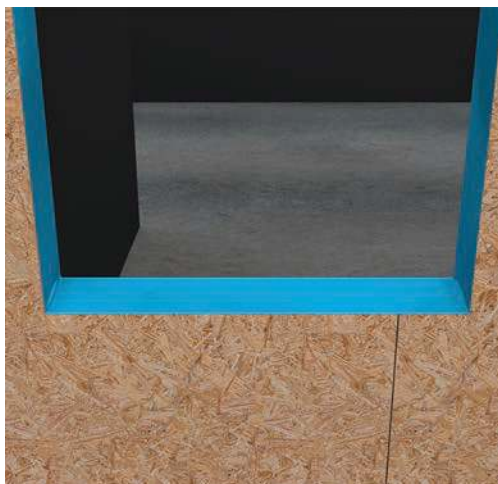
STEP 8

Work material into the right sill corner with your roller and chip brush if needed. Be sure all wood is covered. Do the same on the left and then complete the balance of the sill.



STEP 10

On the outside of the rough opening, over the sheathing itself, you are going to repeat the same procedure. You are going to apply a 4-inch or 6-inch wide (depending on your roller size) pattern of flashing around the window perimeter, so that the substrate cannot be seen any longer, which is approximately 20 mils wet.



STEP 9

If you utilized positive slope by using beveled siding, make sure you cover all areas completely with the fluid applied flashing.



STEP 11

Start on the left side and proceed 6-inches down the face of the sheathing vertically, then 6-inches horizontally just above the header from left to right. Repeat on right side, then complete across the top adjacent to the header.



POLY WALL® BUILDING SOLUTIONS:
Moisture and Air Stop Here®
888-976-POLY (7659) • www.poly-wall.com





Blue Barrier™ Flash 'N Wrap™ 2400

Installation Instructions



STEP 12

Proceed to the left side and continue the coating down the sheathing down vertically past the sill. Do the same on the right. Finish off by applying the fluid applied flashing horizontal over the sheathing adjacent to the sill. You should now have at least a 4-inch coating of Poly Wall Blue Barrier Flash 'N Wrap 2400 which is approximately 20 mils thick. (You can't see any substrate or sheathing under the material.) If you can, go back and "touch those areas up." Remove Blue Barrier residue from surfaces with an approved solvent: mineral spirits, denatured alcohol, or methyl acetate. Do NOT clean Blue Barrier Flash 'N Wrap 2400 residue from surfaces with water because the product is a moisture-cure material, so water will aid in the cure cycle of the product.



STEP 14

Allow approximately 30 minutes for the product to set up depending on relative humidity and temperature. It may still be tacky; but, as long as the product does not attach to your finger at touch, you are ready to install your window. Remove Blue Barrier residue from field substrate surfaces with an approved solvent: mineral spirits, denatured alcohol, or methyl acetate. Do NOT clean Blue Barrier Liquid Wrap 2300 residue from surfaces with water because the product is a moisture-cure material, so water will aid in the cure cycle of the product.



STEP 13

Apply the Blue Barrier Flash 'N Wrap 2400 as field membrane over clean and dry substrate surfaces prepared with board joints and surface voids/gaps/imperfections sealed flush to the substrate surface using a tooled bead of Blue Barrier Joint Filler 2200.



STEP 15

Install your window or door per manufacturer's specifications and instructions. Many manufacturers call for a compatible sealant to be applied prior to the window being installed into the opening. Poly Wall Blue Barrier 2200 Joint Filler can be used for this purpose. Apply as you would another sealant with a caulking or sausage gun to the top and sides of the opening prior to installation of the window.



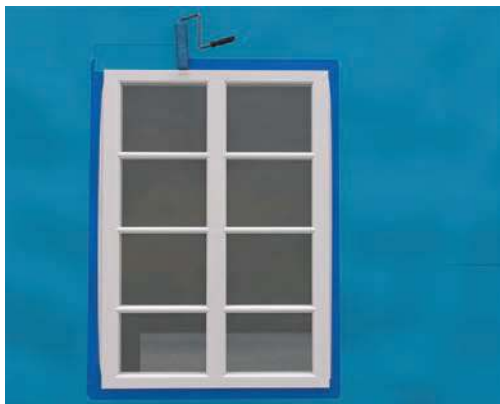
POLY WALL® BUILDING SOLUTIONS:
Moisture and Air Stop Here®
888-976-POLY (7659) • www.poly-wall.com





Blue Barrier™ Flash 'N Wrap™ 2400

Installation Instructions



STEP 16

After window has been installed as directed by manufacturer specifications, apply Poly Wall Blue Barrier Flash 'N Wrap 2400 over header flange of the window itself with your roller or brush, tying it into the existing cured fluid membrane that you had applied earlier. Make sure to completely cover the flange with fluid applied product. Masking off the window frames at this point to protect them from drips and splatters is a good idea.



STEP 17

Repeat on the left and right sides of your window. It is important to leave the sill flange on the window at the bottom un-flashed with fluid flashing to allow moisture relief in the event of a window leakage.

STEP 18

Blue Barrier Flash 'N Wrap 2400 is designed for ultraviolet (UV) exposure up to (9) months. Permanently cover the Blue Barrier material within the (9) month limit to protect the installation and ensure proper performance. Remove any Blue Barrier product with a (UV) exposure time beyond the (9) month limit in its entirety, clean the sheathing substrate surface in preparation for new Blue Barrier material(s) installed as per the installation sequence herein.



POLY WALL® BUILDING SOLUTIONS:
Moisture and Air Stop Here®
888-976-POLY (7659) • www.poly-wall.com



REV01/07/19